



INOX Spray paint

Designed for all lacquer finishes and repairs in the colour of stainless steel, for colour adaptations in the surrounding field of stainless steel surfaces (test the color!).

VERY GOOD COVERAGE

EXCELLENT ADHESION

QUICK - DRYING



ENAMEL Spray paint

Designed for quick and easy repair of irritating scratches or similar small damages on white enamel surfaces such as bath-tubs, sinks, toilet bowls, instantaneous water-heaters, and refrigerators.

QUICK - DRYING

HARD DURABLE FINISH

VERY GOOD COVERAGE

Acrylic Flat Gloss & Matt Colors

9005 Black Gloss	
9005 Black Matt	
9003 White Gloss	
3020 Red	
5017 Blue	
Silver	
Clear Coat Gloss	
7035 Grey Gloss	
8017 Brown Gloss	
9003 White Matt	
1023 Taxi Yellow Gloss	
9006 Wheel Spray Aluminium	
3002 Machine Red Gloss	
1015 Cream Gloss	
6016 Green Gloss	

Metal Effect Gloss Colors

Gold Effect Gold Chrome Effect	
Chrome Effect Aluminium Chrome Effect	

Metal Effect Matt Colors

Bronze Effect Gold	
Bronze Effect Silver	

Special Purpose Sprays

Bumper Spray Paint Black / Siyah	
Inox Spray Paint Metal / Metal	
Enamel Spray Paint	

Akfix®

MASTER OF SOLUTIONS



SPRAY PAINTS

High-grade nitro-combi quality Very good coverage

Excellent adhesion on many surfaces Good flow
Suitable for indoor and outdoor applications smooth surface
Weather-resistant, light-proof, UV-resistant
Scratch-, shock- and impact-resistant



Applications Area: For all lacquer finishes and repairs in the colour of stainless steel, for colour adaptations in the surrounding field of stainless steel surfaces (test the color!). Application is possible on the most under-grounds e. g. metal, wood, glass, ceramics, paper, stone etc.



High-grade acrylic quality For white glossy enamel surfaces

Hard, durable surface Very good coverage
Excellent adhesion Good flow
Scratch-, shock- and impact-resistant smooth surface



Applications Area: Suitable for quick and easy repair of irritating scratches or similar small damages on white enamel surfaces such as bath-tubs, sinks, toilet bowls, instantaneous water-heaters, and refrigerators. Not suitable for large-area repairs such as wash-bowls, bathtubs.



Dirt, rust, grease, dust and moisture must be removed from surface.



Apply with a distance of 25 - 30 cm.



Areas not to be painted should be protected.



First, paint the surfaces from left to right, then from top to bottom.



Before using, Shake the can for two minutes. When applying, shake the can in certain periods.



Paint for a minimum two coats with thin layer.



Make a spraying test on an appropriate surface.



Leave the surface to dry.

[f](#) [i](#) [t](#) [@](#) /Akfixsealants

www.Akfix.com

www.akfix.com | info@akfix.com



ACRYLIC Spray paint

Designed for numerous application possibilities. Special spray system, which is even used by famous graffiti artists. Available in a broad range of the bestselling colours, mainly matching to RAL.

EXCELLENT ADHESION

INDOOR/OUTDOOR APPLICATIONS

QUICK - DRYING



METAL MATT EFFECT Spray paint

Ideal for handicraft works on wood, metal, glass, cardboard and plants. Bronze Spray is particularly suitable for decorative indoor uses and indispensable for stand constructors, decorators, and flowerarrangers. Metal matt spray is also a good choice for handicraft work at home or in courses and seminars.

EXCELLENT ADHESION

HIGH COVERAGE

QUICK - DRYING



METAL GLOSSY EFFECT Spray paint

Gives a long-term look similar to polished chrome and gold to smooth surfaces. Not weather-resistant. Not resistant to abrasion, therefore not suitable to spray on objects for daily use.

EXCELLENT ADHESION

HIGH GLOSS

QUICK - DRYING



BUMPER Spray paint

Scratched and weathered bumpers are a thing of the past. It is used to repair and improve plastic bumpers while still maintaining the original structure. The spray can be directly applied to plastic surfaces without the need to primer and gives synthetic surfaces a silky shine.

LONG LASTING BRIGHTNESS

EXCELLENT COVERAGE

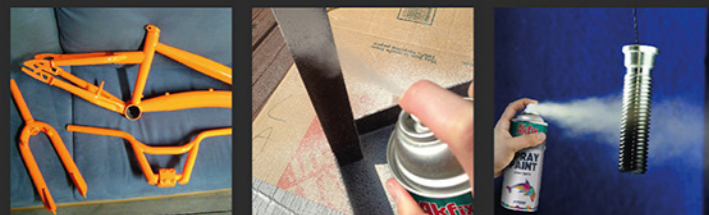
QUICK - DRYING

High-grade nitro-combi quality

Very good coverage

Excellent adhesion on many surfaces
Suitable for indoor and outdoor applications
Weather-resistant, light-proof, UV-resistant

Good flow
smooth surface



Applications Area: Suitable for wood, metal, paper, glass or paintable hard plastics as well as for many textiles for any variety of designing applications. Also applicable for the designing of finery, concrete and natural stone.

High-grade synthetic quality

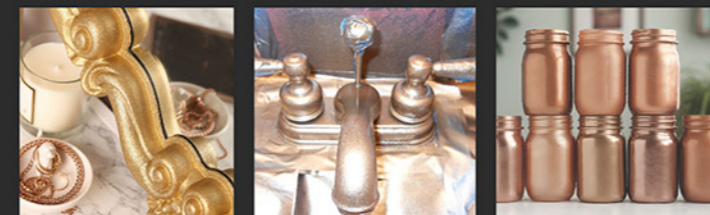
Long-term high coverage and filling power

Quickdrying

Resistant to water and common household cleansers
Effect of gloss can change by intense rubbing or wiping

Good flow
smooth surface

Suitable for use on indoor objects



Applications Area: For handicraft works on wood, metal, glass, cardboard and plants. Suitable for decorative indoor uses.

High-grade acrylic quality

Resistant to water and common household cleansers
Effect of gloss can change by intense rubbing or wiping

Colour of contents similar to cap

Very high gloss

Excellent adhesion

Good flow
smooth surface

Very good coverage



Applications Area: Suitable for all smooth surfaces like metal, wood, glass and many coatable plastics. Indispensable for constructors of fair booths, decorators, florists etc., but also for handicrafts at home, in courses and seminars.

Long-lasting shine and colour

Keeps the bumper's original structure

Scratch and shockproof

Excellent coverage
Excellent adhesion

Suitable for many other synthetic materials

Fast drying time



Applications Area: It can be used to repair and improve plastic bumpers while still maintaining the original structure suitable for decorative indoor uses. Gives synthetic surfaces a silky shine.